

## Machine Tube Luminaire



**RL70CE - 118**

connected load  
fitted with

work equipment  
mains lead  
luminaire body  
material  
weight (net)  
fastening  
light distribution  
system of protection  
class of protection  
total length  
light output  
outside diameter

article no.

120V; 50/60Hz

1 x compact fluorescent lamp TC-L 18 W  
neutral white 4000 K

electronic ballast  
connecting terminal

acrylic clear  
approx. 1,3 kg (2.9 lbs)  
lamp bracket (accessory)

direct

IP 67

I

480 mm (18.9")

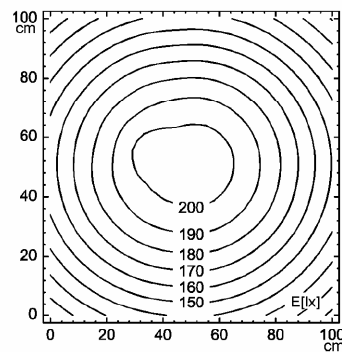
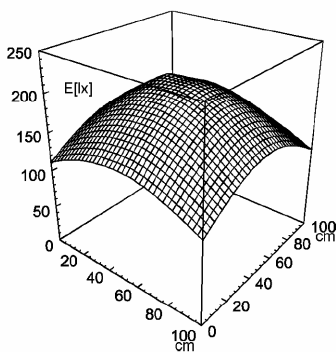
197 mm (7.8")

70 mm (2.8")

C with screwed cable gland

041803016

E<sub>min</sub>: 108 lx  
E<sub>m</sub>: 160 lx  
E<sub>max</sub>: 205 lx



measuring conditions: d=100cm

